

DO NOT OPEN THIS BOOKLET UNTIL ASKED TO DO SO

Name:.....

Arifinkidz Roll No:.....



Total Questions: 35

Time: 60 Minutes




## Arifinkidz Summer Science Olympiad 2024

CLASS

2

SET-A

### Guidelines for the Candidate

- ⚠ You will get additional 5 minutes to fill up information about yourself on the OMR Sheet, before the start of the exam.
  - ⚠ Write your **Name, School** and **Arifinkidz Roll No.** clearly on the OMR Sheet.
  - ⚠ The Question Paper comprises two sections:  
**General Science (30 Questions) and Achievers Section (5 Questions).**  
Each question in Achiever Section carries 2 marks, whereas all other questions carry one mark each.
  - ⚠ All questions are compulsory. There is no negative (-) marking.
  - ⚠ All questions are (MCQ) types. There is only ONE correct answer. Choose only ONE option for an answer.
  - ⚠ To mark your choice of answer by darkening the circles on the OMR Sheet, Use **HB Pencil** or **Blue/Black ball point pen** only. E.g.  
**Question:** Which one of the following is not included in solar system?  
A. Sun                      B. Planet                      C. Telescope                      D. Satellite
- As the correct answer is option C, you must darken the circle  corresponding to option C on the OMR Sheet.
- ⚠ Return the OMR Sheet to the invigilator at the end of the exam.

1. Which of the following statements explain about creepers?

- 1) Creepers are plants with weak stems
- 2) They have soft stems
- 3) They grow along the ground
- 4) They are tall plants.

(A) 1 and 2            (B) 2 and 3            (C) 1 and 3            (D) 2 and 4

2. Which of the following fiber is obtained from a fruit?

(A) Wool            (B) Cotton            (C) Jute            (D) Linen

3. Silk is obtained from:



4. Which of the following is correct about the given groups of animals ?

**Group 1-** giraffe, bear, elephant, fox

**Group 2-** Cow, goat, sheep, horse

- (A) Group 1- Domestic animals, Group 2- Wild animal
- (B) Group 1- Wild animals, Group 2- Domestic animal
- (C) Group 1 and 2 - Wild animals
- (D) None of these.

5. \_\_\_\_\_ is a man-made thing while \_\_\_\_\_ is a natural thing respectively.

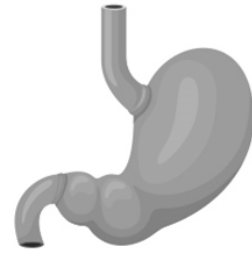
(A) Pot, Sun            (B) Dog, Cat            (C) Mountain, Ant            (D) Book, Eraser

6. Which one of the following is an example of fatty foods?

- (A) Ghee            (B) Salad
- (C) Butter            (D) Both (A) and (C)

7. This is an internal organ of the body. It helps to

- (A) Digest the food
- (B) Think and work
- (C) Breathe air
- (D) Pump the blood to all parts of the body.



8. Which one of the following pictures given are pulses?



9. Cotton clothes are preferred during the summer because these clothes.

- (A) Absorb sweat easily
- (B) Absorb heat
- (C) Do not absorb sweat
- (D) Do not allow the body heat to escape.

10. Which of the following houses has roof made of straw or palm leaves?



11. \_\_\_\_\_ is celebrated by Christians as the birth of Jesus Christ.  
(A) Diwali (B) Eid-UL-Fitr (C) Easter (D) Christmas

---

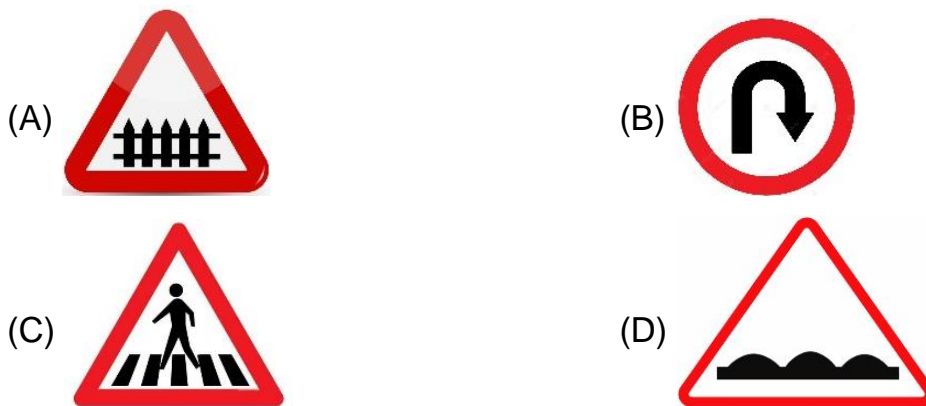
12. On which of the following day India got freedom?  
(A) 2<sup>nd</sup> October 1947 (B) 5<sup>th</sup> September 1947  
(C) 14<sup>th</sup> November, 1947 (D) 15<sup>th</sup> August 1947

---

13. Which of the following is a good habit?  
(A) Washing hands after going to the toilet.  
(B) Bathing once in a week.  
(C) Spitting on the road  
(D) Biting the nails

---

14. Which one of the following represent zebra crossing?



15. Riya is living in Punjab. Her friend Sima is living in Australia. Which of the following is not a useful mode of communication between them?  
(A) Telephone (B) E-mail (C) Aerogrammes (D) Inland letter

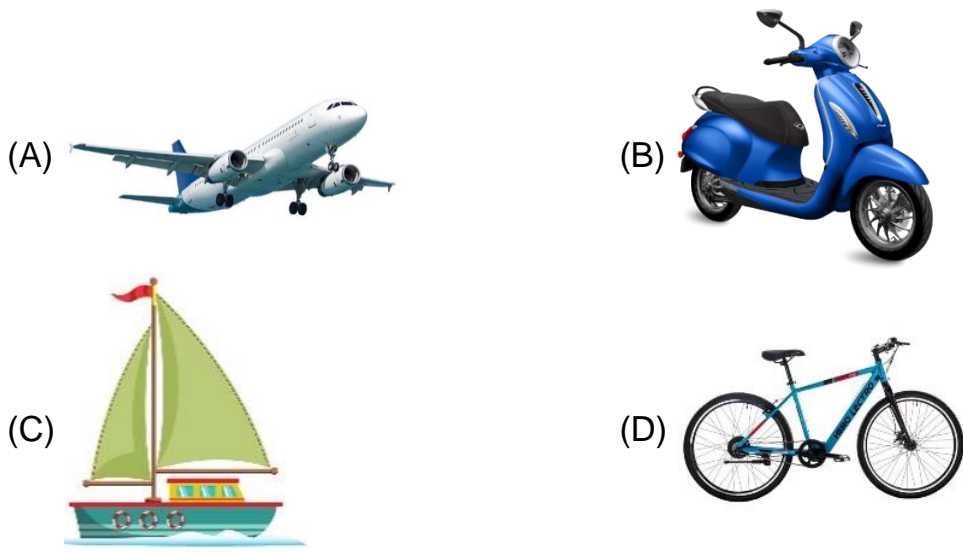
---

16. Which of the following statements is INCORRECT?  
(A) Rainwater fills up lakes and rivers.  
(B) Drinking dirty water can make us ill.  
(C) Washing and bathing in rivers makes the water clean.  
(D) Some rainwater gets stored as ground water.

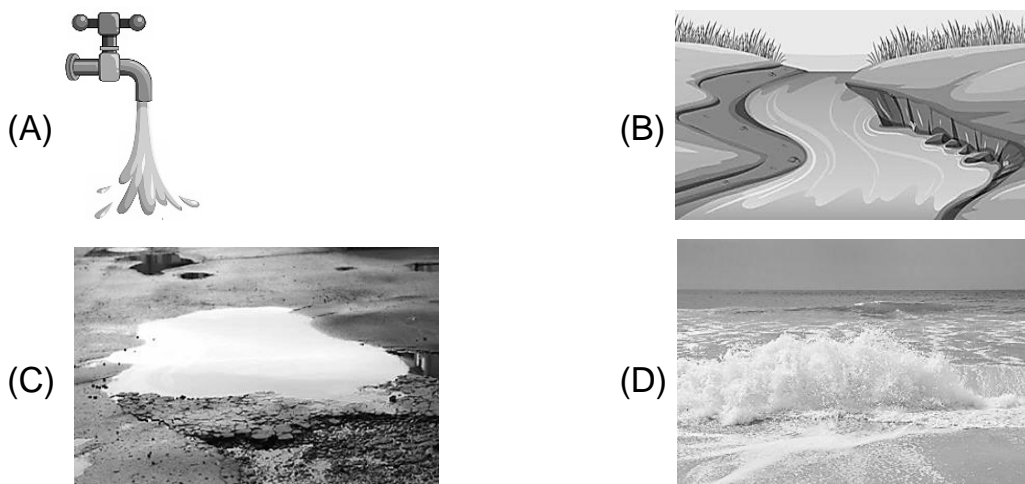
---

17. \_\_\_\_\_ has no role in change of seasons at different places of Earth.  
(A) Earth's tilt on axis. (B) Revolution of earth in its orbit.  
(C) Rotation of Earth in its axis. (D) All of these.

18. Which of the following is the least expensive means of transport?



19. Which of the following is used as source of drinking water?



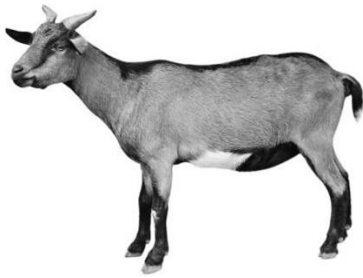
20. The moon shines brightly in the sky. Where does the light come from which makes the moon shine?

- (A) The Moon gets its light from the sun.
- (B) The Moon gets its light from Satellite.
- (C) The Moon gets its light from the earth.
- (D) The Moon has its own light.

21. Select the thing that we do not get from plants.

- (A) Fruit
- (B) Wood
- (C) Honey
- (D) Spice

22. Baby of the animal shown in the given picture is called a



- (A) Cub                      (B) Kitten                      (C) Kid                      (D) Puppy
- 

23. Match the following

**List -I**

- i. Brain
- ii. Heart
- iii. Tongue
- iv. Lungs

**List – II**

- 1. Taste
- 2. Pumps
- 3. Breathe
- 4. Think

- (A) i-1, ii-2, iii-4, iv-3                      (B) i-2, ii-4, iii-1, iv-3  
(C) i-1, ii-2, iii-1, iv-4                      (D) i-4, ii-2, iii-1, iv-3
- 

24. Which of the following is NOT a healthy food?



25. People built their house on \_\_\_\_\_ at the place where it rains a lot.

- (A) Trees                      (B) Bridges                      (C) Stilts                      (D) None of these
- 

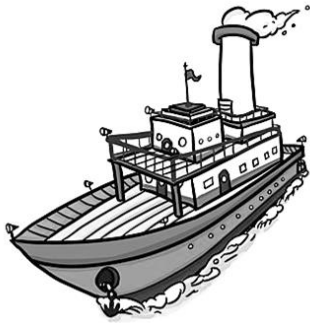
26. Rishan lives with his father, mother, sister and grandfather, which kind of family in this?

- (A) Small family                      (B) Big family                      (C) Joint Family                      (D) None of these

27. Which of the following we should do with the help of an adult?

- (A) Using scissor (B) Cutting nails  
(C) Learning swimming (D) All are correct
- 

28. Which of the following is correct about the vehicle shown in the picture?



- (A) It carries people across seas (B) It runs by steam engines  
(C) It is a steamer (D) All of these
- 

29. Neeta reuses water that is used to wash vegetables to water the plants. She is practicing \_\_\_\_\_ of water.

- (A) Evaporation (B) Conservation (C) Pollution (D) Condensation
- 

30. Which of these is the coldest planet in our solar system?

- (A) Saturn (B) Uranus (C) Jupiter (D) Neptune
- 

### ACHIEVERS SECTION

31. Select the correct one regarding safety rules.

#### Never Touch

- (A) Crayons and water colour  
(B) Knives and Scissors  
(C) Books and pencils  
(D) Electrical wires and sockets with wet hands

#### Never Play

- Near lakes or ponds  
Following the rules of game  
With bat and ball  
With sharp objects
- 

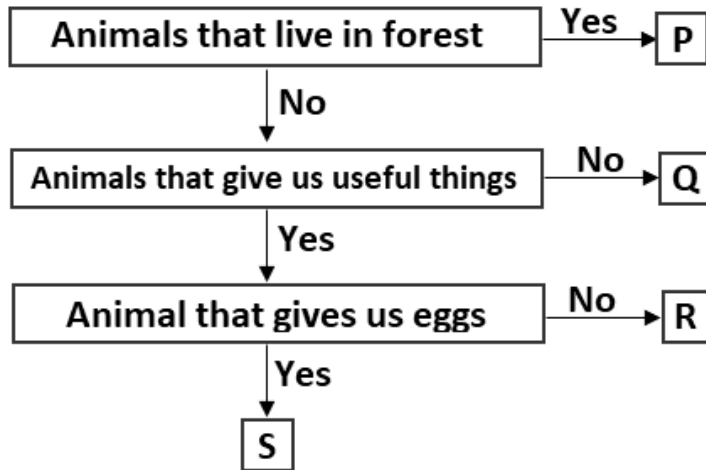
32. Choose the correct option (T-True, F- False).

- i. Tonga is a water transport.  
ii. Submarine is an air transport.

iii. Ambulance is used for taking a patient to a hospital.

- (A) FTF                      (B) FTT                      (C) FFT                      (D) TFT

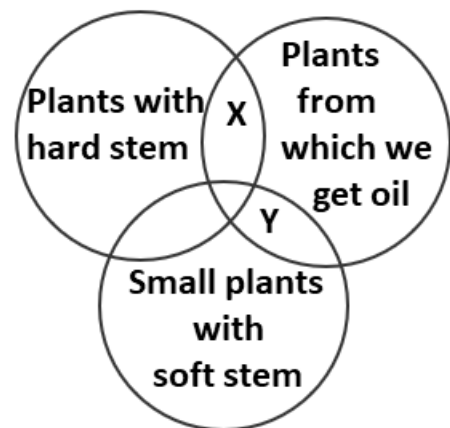
33. Zeenat was classifying different animals into groups. Select the option that correctly identifies the options P, Q, R, S.



- (A) P-Zebra, Q-Honey bee, R-Goat, S-Fish  
(B) P- Donkey, Q-Cat, R-Hen, S-Duck  
(C) P- Giraffe, Q-Dog, R-Cow, S-Hen  
(D) P-Goat, Q-Fish, R-Zebra, S-Hen

34. Refer to the given diagram. Which of the following best represents X and Y?

- (A) X-rice, Y-Sun flower  
(B) X- Coconut, Y-Sun flower  
(C) X-Groundnut, Y-Coconut  
(D) X-Groundnut, Y-Mustard



35. Which of the following processes of water cycle is responsible for drying of wet clothes?

- (A) Evaporation      (B) Condensation      (C) Precipitation      (D) Collection